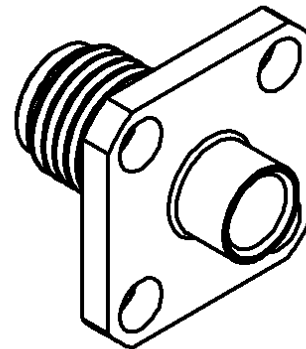
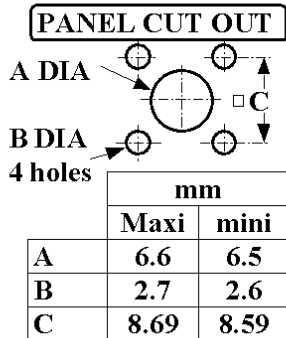
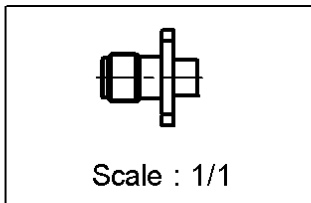
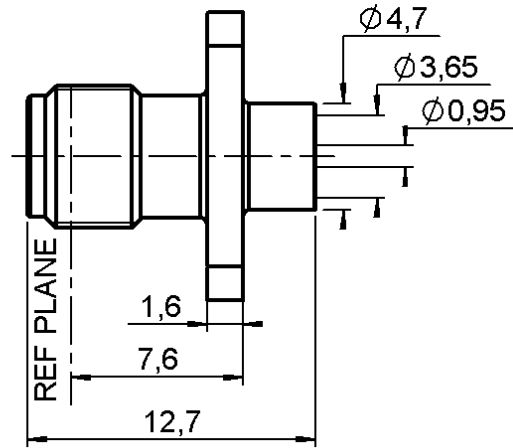
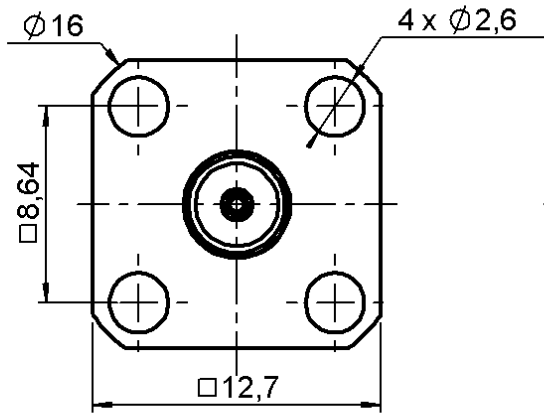


STRAIGHT SQUARE FLANGE PLUG SOLDER TYPE

R125.255.009

CABLE .141

Series : SMA



All dimensions are in mm.



COMPONENTS	MATERIALS	PLATINGS (µm)
BODY	BERYLLIUM COPPER	GOLD 1.3 OVER NICKEL 2
CENTER CONTACT	BERYLLIUM COPPER	GOLD 2.54 OVER COPPER 2.54
OUTER CONTACT	-	-
INSULATOR	PTFE	-
GASKET	-	-
OTHERS PARTS	-	-
-	-	-
-	-	-

Issue : 0220 C

In the effort to improve our products, we reserve the right to make changes judged to be necessary.



STRAIGHT SQUARE FLANGE PLUG SOLDER TYPE

R125.255.009

CABLE .141

Series : SMA

PACKAGING

Standard	Unit	Other
1	-	Contact us

SPECIFICATION

CABLE ASSEMBLY

Stripping	a	b	c	d	e	f
mm	3.17	0.00	0.00	0.00	0.00	0.00

ELECTRICAL CHARACTERISTICS

Assembly instruction : **Solder 01**

Recommended cable(s)
RG 402
KS 2

Cable retention
- pull off **270 N mini**
- torque **NA N.cm**

Impedance **50 Ω**
 Frequency **0-18 GHz**
 VSWR **1.05 + 0.008** x F(GHz) Maxi
 Insertion loss **0.03** \sqrt{F} (GHz) dB Maxi
 RF leakage - (**90** - F(GHz)) dB Maxi
 Voltage rating **500** Veff Maxi
 Dielectric withstanding voltage **1000** Veff mini
 Insulation resistance **5000** MΩ mini

TOOLING

Part Number	Description	Hexagon
.	.	.
R282.120.010	SMA TOOLBOX	
R282.744.220	SOLDERING POSITIONER (CENTER CONTACT)	
R282.740.000	SOLDERING MOUNTING	
R282.862.060	CONTROL GAUGE	
R282.744.011	SOLDERING POSITIONER (BODY)	
R282.914.010	DIELECTRIC RECESS GAUGE	
R282.915.010	DIELECTRIC RECESS TOOL	
R282.730.043	INSULATOR MOUNTING TOOL	
R282.067.000	POINTER GAUGE	
R282.053.000	STRIPPING TOOL	

MECHANICAL CHARACTERISTICS

Center contact retention
 Axial force – Mating end **NA N mini**
 Axial force – Opposite end **NA N mini**
 Torque **NA N.cm mini**

Recommended torque
 Mating **NA N.cm**
 Panel nut **NA N.cm**
 Clamp nut **NA N.cm**
 A/F clamp nut **0.000 mm**

Mating life **500 Cycles mini**
 Weight **4.000 g**

ENVIRONMENTAL

Operating temperature **-65/+105 °C**
 Hermetic seal **NA Atm.cm3/s**
 Panel leakage **NA**

OTHERS CHARACTERISTICS

Issue : 0220 C

In the effort to improve our products, we reserve the right to make changes judged to be necessary.

